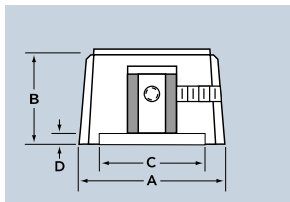




ROUND



PART NUMBER

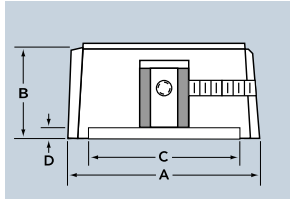
| | A Diam. | B Height | C Diam. | D Depth |
|--------|------------|-------------|------------|------------|
| ST-1 N | .45 | .55 | — | — |
| ST-2 N | .50 | .68 | — | — |
| ST-3 N | .61 | .55 | .43 | .09 |
| ST-5 N | .75 | .37 | .50 | .05 |
| ST-6 N | 1.15 | .54 | .88 | .10 |
| ST-7 N | 1.50 | .60 | 1.24 | .10 |
| ST-8 N | 1.90 | .82 | — | — |

TO COMPLETE PART NUMBER

| Style | Shaft Hole | Color |
|-------|------------|-------|
| N | 1 | BB |
| | 2 | GB |
| | 3 | YB |
| | 4 | RB |
| | 5 | |



ROUND W/POINTER



PART NUMBER

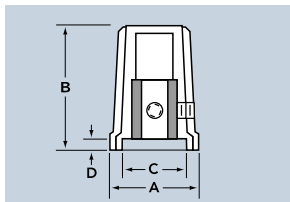
| | A Diam. | B Height | C Diam. | D Depth |
|--------|------------|-------------|------------|------------|
| ST-1 P | .45 | .55 | — | — |
| ST-2 P | .50 | .68 | — | — |
| ST-3 P | .61 | .55 | .43 | .09 |
| ST-5 P | .75 | .37 | .50 | .05 |
| ST-6 P | 1.15 | .54 | .88 | .10 |
| ST-7 P | 1.50 | .60 | 1.24 | .10 |
| ST-8 P | 1.90 | .82 | — | — |

TO COMPLETE PART NUMBER

| Style | Shaft Hole | Color |
|-------|------------|-------|
| P | 1 | BB |
| | 2 | GB |
| | 3 | YB |
| | 4 | RB |
| | 5 | |



SKIRTED ROUND



PART NUMBER

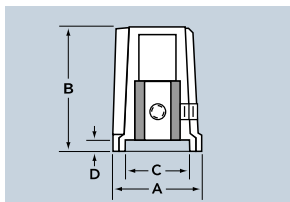
| | A Diam. | B Height | C Diam. | D Depth |
|--------|------------|-------------|------------|------------|
| ST-1 D | .57 | .71 | .41 | .09 |
| ST-2 D | .62 | .84 | .48 | .09 |
| ST-3 D | .73 | .71 | .58 | .09 |
| ST-5 D | .84 | .45 | .60 | .05 |
| ST-6 D | 1.25 | .63 | .98 | .10 |
| ST-7 D | 1.67 | .73 | 1.41 | .10 |
| ST-8 D | 2.02 | 1.00 | 1.78 | .13 |

TO COMPLETE PART NUMBER

| Style | Shaft Hole | Color |
|-------|------------|-------|
| D | 1 | BB |
| | 2 | GB |
| | 3 | YB |
| | 4 | RB |
| | 5 | |



SKIRTED W/POINTER



PART NUMBER

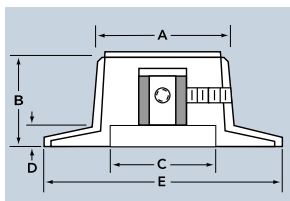
| | A Diam. | B Height | C Diam. | D Depth |
|--------|------------|-------------|------------|------------|
| ST-1 K | .57 | .71 | .41 | .09 |
| ST-2 K | .62 | .84 | .48 | .09 |
| ST-3 K | .73 | .71 | .58 | .09 |
| ST-5 K | .84 | .45 | .60 | .05 |
| ST-6 K | 1.25 | .63 | .98 | .10 |
| ST-7 K | 1.67 | .73 | 1.41 | .10 |
| ST-8 K | 2.02 | 1.00 | 1.78 | .13 |

TO COMPLETE PART NUMBER

| Style | Shaft Hole | Color |
|-------|------------|-------|
| K | 1 | BB |
| | 2 | GB |
| | 3 | YB |
| | 4 | RB |
| | 5 | |



ROUND W/DIAL



PART NUMBER

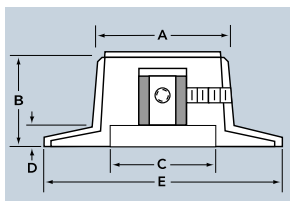
| | A Diam. | B Height | C Diam. | D Depth | E Diam. |
|--------|------------|-------------|------------|------------|------------|
| ST-1 G | .65 | .80 | .55 | .08 | 1.08 |
| ST-2 G | .91 | .86 | .65 | .22 | 1.42 |
| ST-3 G | 1.14 | .72 | .70 | .18 | 1.74 |

TO COMPLETE PART NUMBER

| Style | Shaft Hole | Color |
|-------|------------|-------|
| G | 1 | BB |
| | 2 | GB |
| | 3 | YB |
| | 4 | RB |
| | 5 | |



ROUND W/DIAL W/INDICATOR



PART NUMBER

| | A Diam. | B Height | C Diam. | D Depth | E Diam. |
|--------|------------|-------------|------------|------------|------------|
| ST-1 F | .65 | .80 | .55 | .08 | 1.08 |
| ST-2 F | .91 | .86 | .65 | .22 | 1.42 |
| ST-3 F | 1.14 | .72 | .70 | .18 | 1.74 |

TO COMPLETE PART NUMBER

| Style | Shaft Hole | Color |
|-------|------------|-------|
| F | 1 | BB |
| | 2 | GB |
| | 3 | YB |
| | 4 | RB |
| | 5 | |

EHC's new "soft touch" knobs come in a variety of colors and can even be made in custom colors and are available with custom markings. Shaft configurations include a bushing with 2 set screws, a spring clip, a knurled plastic shaft or a "D" flat shaft.

Soft Touch

also available as

Squared Fluted Knobs

Push-on Knobs



Rounded Fluted Knobs



Over-molded Knobs

ORDERING GUIDE FOR ST SERIES

| Style Plain or w/Indicator | Diameter | Shaft Hole (or Spring) | Color | SET SCREW SPECIFICATIONS | | |
|-------------------------------|--|---------------------------|-----------------|--------------------------|-----------------|-----------------|
| | | | | Series | 1/8" Shaft Hole | 1/4" Shaft Hole |
| N-Plain Round | Indicate Part Number from Tables Above | 1- 1/8" Round | BB- Black Matte | 1 | 4-40 UNC-3A | 4-40 UNC-3A |
| D-Skirted Round | | 2- 1/4" Round | GB- Gray Matte | 2 | 4-40 UNC-3A | 4-40 UNC-3A |
| F- Rnd Dial w/Indicator | | 3- 3/8" "D" Hole* | YB- Yellow | 3 | 4-40 UNC-3A | 4-40 UNC-3A |
| G-Round w/Dial | | 4- 1/4" "D" Hole* | RB- Red | 5 | 4-40 UNC-3A | 4-40 UNC-3A |
| P- Round w/Pointer | | 5-.190 Round | LB- Blue | 6 | 4-40 UNC-3A | 8-32 UNC-3A |
| K-Skirted w/Pointer | | * D-Flat on Pointer. | WB-White | 7 | 4-40 UNC-3A | 8-32 UNC-3A |
| | | | | 8 | 4-40 UNC-3A | 8-32 UNC-3A |

See table below for Push-on control styles.*

CONTROL STYLES SPECIFICATIONS EXAMPLES FOR PUSH-ON KNOBS

| Letter | Shaft Size | Height | Description |
|--------|--------------------------|--------|--------------------------|
| A | 1/4" Knurl | 3/8" | Standard Knurl- 24 Teeth |
| C | 6mm diam. x 4.5mm Flat | 3/8" | For Spring #79-06600P |
| V | .250" diam. x .156" Flat | 13/32" | For Spring #79-02000P |

If you require a non-standard spring style not shown in the above table please consult an EHC engineer for an alternate or custom solution.



| EXAMPLE: ST-2P2YB2C | Series | Diameter | Style | Push-on* or Shaft Hole | Color | Set Screws |
|---------------------|--------|----------|-------|------------------------------|-------|------------|
| | | | | | | Quantity |
| | ST- | 2 | K | 2 | YB | 2 |

* For Push-on knobs use letter designation for spring (Control Style) style. Push-on knobs require no set screws.